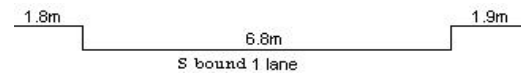


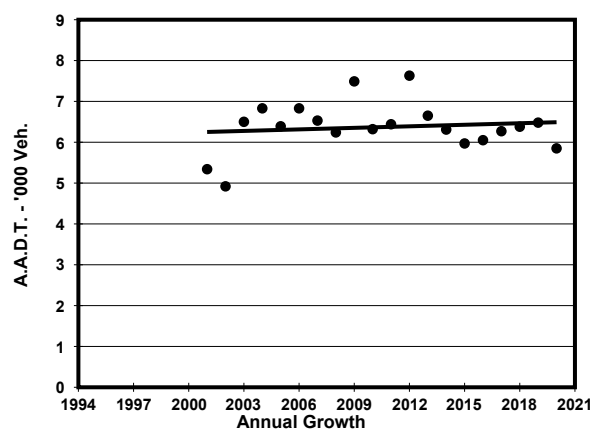
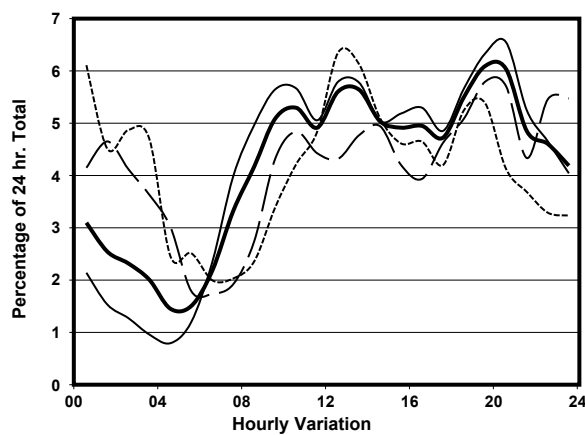
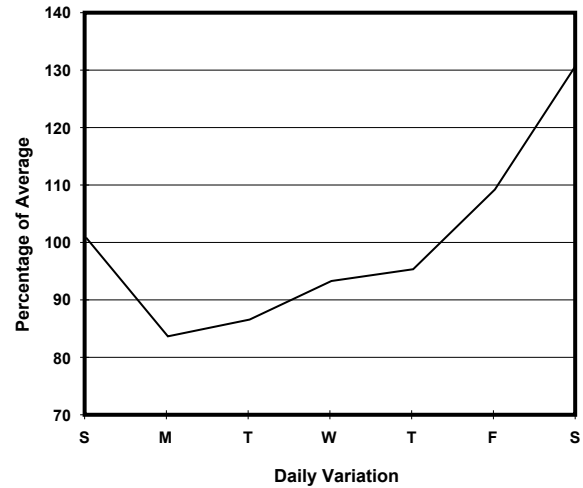
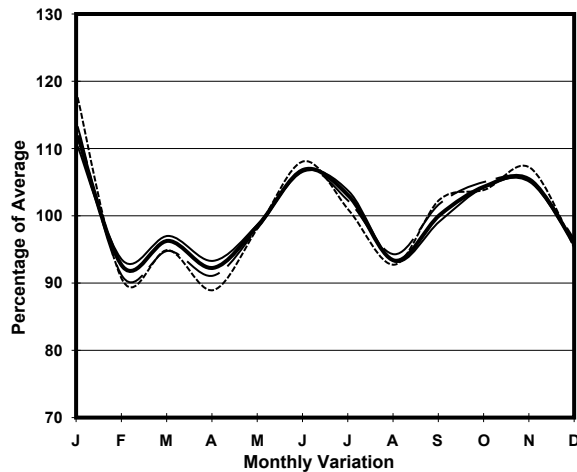
YEAR 2020

LINK D'AGUILAR ST (from QUEEN'S RD C to WYNDHAM ST)

COVERAGE (B) STATION 2404
ROAD NETWORK MINOR
ROAD TYPE LOCAL DISTRIBUTOR



1. TRAFFIC FLOW VARIATION AND GROWTH



— All day — Mon.- Fri. Sat. - - - - - Sun.

2. TRAFFIC CHARACTERISTICS (BY DIRECTION)

Parameter	All - Day	Mon. - Fri.	Sat.	Sun.
SOUTH BOUND				
A.A.D.T.	5850	5480	7670	5920
R 12 / 24 - %	59.2	62.9	50.1	53.1
R 16 / 24 - %	80.7	85.7	71.4	69.6
AM Peak Hour	0900-1000	0900-1000	0900-1000	0900-1000
One-way flow at AM peak hour	300	310	330	200
T - % (AM)	-	5.1	-	-
PM Peak Hour	1800-1900	1800-1900	1800-1900	1800-1900
One-way flow at PM peak hour	320	310	390	310
T - % (PM)	-	4.3	-	-
Prop.of commercial vehicles - 16 hr.	-	-	-	-
 A.A.D.T.	-	-	-	-
R 12 / 24 - %	-	-	-	-
R 16 / 24 - %	-	-	-	-
AM Peak Hour	-	-	-	-
One-way flow at AM peak hour	-	-	-	-
T - % (AM)	-	-	-	-
PM Peak Hour	-	-	-	-
One-way flow at PM peak hour	-	-	-	-
T - % (PM)	-	-	-	-
Prop.of commercial vehicles - 16 hr.	-	-	-	-

3. OTHER INFORMATION AND COMMENT

4. Vehicle classification and occupancy - Monday to Friday

Time		Class of vehicle									
		Motor Cycle	Private Car	Taxi	Private LB	PLB	Goods veh.		Non Fr. Bus	Fr. Bus	
							Light	M & H		SD	DD
0700-0800	Pro	3.2	6.4	60.3	0.0	0.0	19.0	0.0	0.0	8.7	2.4
	Ocp	1.0	1.5	1.6	0.0	0.0	1.0	0.0	0.0	20.3	5.3
0800-0900	Pro	4.4	28.7	46.4	2.2	0.0	8.8	2.2	0.0	5.5	1.7
	Ocp	1.0	1.2	1.4	1.0	0.0	1.8	2.0	0.0	25.3	8.7
0900-1000	Pro	1.6	31.1	46.7	0.0	0.0	15.6	0.0	0.0	3.5	1.6
	Ocp	1.0	1.4	1.2	0.0	0.0	1.8	0.0	0.0	14.6	13.8
1000-1100	Pro	5.2	45.2	19.1	0.0	0.0	22.6	1.7	0.0	3.9	2.2
	Ocp	1.0	1.2	1.6	0.0	0.0	1.8	4.0	0.0	9.6	6.4
1100-1200	Pro	9.2	29.2	38.5	0.0	0.0	12.3	6.2	0.0	3.1	1.5
	Ocp	1.2	1.2	1.6	0.0	0.0	1.6	1.8	0.0	7.6	8.5
1200-1300	Pro	14.4	30.3	40.4	0.0	0.0	10.1	0.0	0.0	2.9	1.8
	Ocp	1.0	1.1	1.9	0.0	0.0	1.9	0.0	0.0	8.0	9.0
1300-1400	Pro	6.2	49.2	20.0	0.0	0.0	20.0	0.0	0.0	3.1	1.5
	Ocp	1.0	1.1	1.8	0.0	0.0	1.5	0.0	0.0	7.8	5.0
1400-1500	Pro	1.9	59.3	14.8	0.0	0.0	16.7	1.9	0.0	4.2	1.4
	Ocp	1.0	1.4	2.1	0.0	0.0	1.8	1.0	0.0	8.1	10.0
1500-1600	Pro	4.6	50.9	18.5	0.0	0.0	18.5	0.0	0.0	5.8	1.7
	Ocp	1.0	1.4	2.5	0.0	0.0	1.5	0.0	0.0	8.5	6.0
1600-1700	Pro	6.6	44.8	24.9	0.0	0.0	14.9	1.7	1.7	3.7	1.7
	Ocp	1.0	1.3	1.7	0.0	0.0	1.6	1.0	8.0	11.3	8.3
1700-1800	Pro	14.8	37.0	37.0	0.0	0.0	3.7	1.9	0.0	4.2	1.4
	Ocp	1.0	1.1	2.0	0.0	0.0	2.0	1.0	0.0	13.6	12.0
1800-1900	Pro	11.6	46.4	34.8	0.0	0.0	2.9	0.0	0.0	3.6	0.7
	Ocp	1.0	1.3	2.1	0.0	0.0	1.0	0.0	0.0	21.4	24.0
1900-2000	Pro	10.5	23.6	52.5	0.0	0.0	6.6	1.3	1.3	3.0	1.3
	Ocp	1.0	1.6	2.1	0.0	0.0	1.2	1.0	1.0	18.0	18.8
2000-2100 Peak hour	Pro	4.5	26.8	60.3	0.0	0.0	0.0	2.2	0.0	4.5	1.7
	Ocp	1.0	1.2	1.8	0.0	0.0	0.0	2.0	0.0	13.5	6.3
2100-2200	Pro	8.7	39.3	43.7	0.0	0.0	2.2	0.0	0.0	4.4	1.6
	Ocp	1.0	1.3	1.5	0.0	0.0	2.0	0.0	0.0	7.6	5.7
2200-2300	Pro	0.0	28.7	64.7	0.0	0.0	0.0	0.0	0.0	4.2	2.4
	Ocp	0.0	1.3	1.7	0.0	0.0	0.0	0.0	0.0	4.9	6.5
16 hours	Pro	7.2	36.8	37.9	0.1	0.0	10.9	1.2	0.2	4.0	1.6
	Ocp	1.0	1.3	1.8	1.0	0.0	1.6	1.7	4.5	13.0	9.3

Legend: Pro. Proportion of vehicles in % (Sum may not add up to 100% due to figure rounding)*

Ocp. Average occupancy of vehicles including both driver and passengers*

M&H Medium and Heavy

* All traffic data are collected from combined bounds